

Overview and Rationale for Revision

This Summary of Changes identifies the significant updates made to the NKBA's *Kitchen and Bath Planning Guidelines* and its appendices, tracing the transition from the 4th edition (2021, 2023) to the 5th edition (2026). Authorized by Subject Matter Experts and industry consultants, the 5th edition aligns the Guidelines with the latest standards from the International Residential Code (IRC), International Green Construction Code (IgCC), International Mechanical Code (IMC), National Building Code of Canada, and CSA/ASC B652 Accessible Dwellings. This summary details corrections made when transitioning from the 4th to the 5th edition. To view active errata for the 5th edition, please use the links below.

Contents

[Table of Contents Structure](#)

[Summary of Chapter Changes](#)

[Summary of Guideline Changes](#)

[Summary of Appendix Changes](#)

[Errata](#)

Table of Contents Structure

List of Figures and Tables

Acknowledgements

Preface

About NKBA | KBIS

Chapters

0 Introduction

- 0.1 Overview
- 0.2 The Planning Methodology
- 0.3 Dimensions
- 0.4 Terminology
- 0.5 Referenced Publications

1 Human Factors and Accessibility

- 1.1 Clear Floor Space
- 1.2 Turning Diameters
- 1.3 T-turn Maneuvers
- 1.4 Knee and Toe Clearances
- 1.5 Circulation Clearances
- 1.6 Comfort (Buffer) Zones
- 1.7 Common Height and Reach Ranges
- 1.8 Accessible Height and Reach Ranges
- 1.9 Grab Bars and Assist Bars

2 Egress and Passageway Planning

- 2.1 Doors and Doorways

- 2.2 Door Hardware
- 2.3 Floor Transitions and Steps
- 2.4 Door Interference
- 2.5 Passageways
- 2.6 Ceiling Heights
- 2.7 Windows

3 Kitchen Planning

- 3.1 Kitchen Center Planning
 - 3.1.1 Kitchen Work Centers
 - 3.1.2 Kitchen Activity Zones
 - 3.1.3 Kitchen Counters and Work Surfaces
 - 3.1.4 Kitchen Work Route Distance
 - 3.1.5 Kitchen Landing Areas
 - 3.1.6 Kitchen Counter Seating
 - 3.1.7 Separated Dining and Banquettes
- 3.2 Kitchen Fixture and Equipment Planning
 - 3.2.1 General Code Compliance
 - 3.2.2 Kitchen Sink and Faucet
 - 3.2.3 Dishwashing Equipment
 - 3.2.4 Preservation Equipment
 - 3.2.5 Cooking Surface Equipment
 - 3.2.6 Kitchen Exhaust Equipment
 - 3.2.7 Ovens, Microwaves, and Other Auxiliary Point-Of-Use Equipment
 - 3.2.8 Household Waste Receptacles

4 Bath Planning

- 4.1 Bath Center Planning
 - 4.1.1 Bath Cleansing Centers
 - 4.1.2 Grooming Center Clearances
 - 4.1.3 Vanity Counters and Work Surfaces

- 4.1.4 Toileting Center Clearances
- 4.1.5 Toilet Compartments
- 4.1.6 Bathing/Showering Center Clearances
- 4.1.7 Shower Compartments
- 4.1.8 Shower Surrounds, Curtains, and Rods
- 4.1.9 Bath And Shower Seating
- 4.1.10 Steam Shower Compartments
- 4.1.11 Wet Room Compartments
- 4.1.12 Recessed Storage Niches

4.2 Bath Fixture and Equipment Planning

- 4.2.1 General Code Compliance
- 4.2.2 Lavatory Sink and Faucet
- 4.2.3 Vanity Mirrors
- 4.2.4 Toilet and Integrated Bidet-Toilet Fixtures
- 4.2.5 Grab Bars at a Toilet
- 4.2.6 Bidet Fixtures
- 4.2.7 Urinal Fixtures
- 4.2.8 Grab Bars at a Urinal
- 4.2.9 Bathtub Fixtures
- 4.2.10 Grab Bars at a Bathtub
- 4.2.11 Grab Bars at a Shower
- 4.2.12 Bath Volume Controls and Fillers
- 4.2.13 Shower Volume Controls and Spray Heads
- 4.2.14 Bath Exhaust Equipment
- 4.2.15 Bath Accessories

5 Support Space Planning

- 5.1 General Code Compliance
- 5.2 Laundry Planning
 - 5.2.1 Laundry Infrastructure and Clearances
 - 5.2.2 Laundry Sink and Faucet

- 5.2.3 Laundry Equipment
- 5.2.4 Laundry Storage and Accessories
- 5.3 Closet Planning
 - 5.3.1 Closet Clearances
 - 5.3.2 Clothing Storage and Accessories
- 5.4 Exercise Area Planning
- 5.5 Saunas And Infrared Room Planning
- 5.6 Home Office Planning

6 Interior Environment Planning

- 6.1 General Practice
- 6.2 Wall Blocking and Reinforced Backing
- 6.3 Waterproofing and Moisture-Resistant Backing
- 6.4 Storage Systems Planning
 - 6.4.1 Storage Types and Configurations
 - 6.4.3 Storage Common Dimensions
 - 6.4.4 Casework Mechanical Hardware
 - 6.4.5 Cabinet Interior and Exterior Finishing
- 6.5 Surfacing Materials
 - 6.5.1 Surface Material Health and Sustainability
 - 6.5.2 Counter and Work Surface Materials
 - 6.5.3 Wall Surface Materials
 - 6.5.4 Flooring Covering Materials
 - 6.5.5 Glazing Materials
- 6.6 Interior Acoustics Planning
- 6.7 Thermal Comfort Planning

7 Building Systems Planning

- 7.1 Ventilation Systems Planning
 - 7.1.1 General Infrastructure
 - 7.1.2 Kitchen Exhaust Calculations

- 7.1.3 Bath Exhaust Calculations
- 7.1.4 Laundry Exhaust
- 7.1.5 Make-Up Air Systems
- 7.2 Power and Communication Systems Planning
 - 7.2.1 General Infrastructure
 - 7.2.2 Kitchen Power Outlets
 - 7.2.3 Bath Power Outlets
 - 7.2.4 Laundry Power Outlets
 - 7.2.5 Home Automation
- 7.3 Lighting and Illumination Systems Planning
 - 7.3.1 General Infrastructure
 - 7.3.2 Kitchen Illumination
 - 7.3.3 Bath Illumination
 - 7.3.4 Closet Illumination
- 7.4 Plumbing Systems Planning
- 7.5 Fire and Life-Safety Systems Planning

8 Outdoor Living Planning

- 8.1 General Code Compliance
- 8.2 Outdoor Infrastructure
- 8.3 Safety in an Outdoor Kitchen or Bath
- 8.4 Outdoor Kitchens
 - 8.4.1 Outdoor Kitchen Sink and Faucet
 - 8.4.2 Outdoor Kitchen Grilling and Oven Equipment
 - 8.4.3 Outdoor Kitchen Ventilation Equipment
- 8.5 Outdoor Baths
 - 8.5.1 Outdoor Bath Lavatory Sink and Faucet
 - 8.5.2 Outdoor Bath Fixture and Amenities
 - 8.5.3 Outdoor Bath Ventilation Equipment
- 8.6 Outdoor Surfacing Materials

Appendix A - Accessible Design Basics

Appendix B - Common Item Sizes

Appendix C - Metric Conversions

Abbreviations

Glossary

Summary of Chapter Changes

New Chapters	Change Type	Description of Change
Chapter 0 Introduction	Added new Chapter, harmonized materials.	To provide specific clarity around the functional aspects of the Guidelines and provide additional clarity around the Planning Methodology.
Chapter 1 Human Factors and Accessibility	Added a new Chapter, harmonized Guidelines pertaining to human factors and accessibility.	Feedback: NKBA Membership described accessibility as challenging to navigate within the 4th ed.
Chapter 2 Egress and Passageway Planning	Sequence change.	Aligned sequence change to include alignment with previous chapter introductions.

<p>Chapter 3 Kitchen Planning</p>	<p>Sequence change.</p>	<p>Aligned sequence change to include alignment with previous chapter introductions.</p>
<p>Chapter 4 Bath Planning</p>	<p>Sequence change.</p>	<p>Aligned sequence change to include alignment with previous chapter introductions.</p>
<p>Chapter 5 Support Space Planning</p>	<p>Sequence change.</p>	<p>Aligned sequence change to include alignment with previous chapter introductions.</p>
<p>Chapter 6 Interior Environment Planning</p>	<p>Sequence change.</p>	<p>Aligned sequence change to include alignment with previous chapter introductions.</p>
<p>Chapter 7 Building Systems Planning</p>	<p>Chapter Title changed, sequence changed.</p>	<p>Title changed from “8.0 Mechanical, Electrical, Plumbing & Safety Planning” because Building Systems Planning is more descriptive of the contents of this chapter. Aligned sequence change to include alignment with previous chapter introductions.</p>
<p>Chapter 8 Outdoor Living Planning</p>	<p>Chapter Title changed, combined chapters, sequence change.</p>	<p>Change based on feedback. Title changed from [2] separate Chapters “5.0 Outdoor Kitchen Planning” and “6.0 Outdoor Bath Planning”. NKBA Membership described outdoor kitchen and bath planning as valuable; however, upon further review, this chapter was not determined to be the primary focus of core content material as newly sequenced.</p>
<p>Appendix</p>	<p>Reorganized images, Sections, and introduced checklists to the new material within the new edition.</p>	<p>Reduction of repetitive information sequenced into Chapter 1, Human Factors and Accessibility, and introduction of planning checklists.</p>

Abbreviations	Added a new section.	Listing abbreviations simplifies common terminology and abbreviations used throughout the Guidelines.
Glossary	Added a new section.	Lists terminology used in the Guidelines that requires additional definition.

Summary of Guideline Changes

New Guideline	Change Type	Description of Change
Chapter 0 Introduction	Added new Chapter, harmonized materials.	To provide specific clarity around the functional aspects of the Guidelines and provide additional clarity around the Planning Methodology.
Guideline 0.1 (Overview)	Added a new Guideline.	Addition of an Overview statement providing the intention and purpose of the Guidelines.
Guideline 0.2 (The Planning Methodology)	Added a new Guideline, reorganized, and clarified.	Based upon feedback, NKBA Membership described the Planning Methodology as challenging to synthesize in relation to the practice of kitchen and bath design. <ul style="list-style-type: none"> ● Instead of: “users” ● Read: “person” or “people”
Guideline 0.3 (Dimensions)	Added a new Guideline.	Describes the dimensional unit systems used throughout the Guidelines.
Guideline 0.4 (Terminology)	Added a new Guideline.	Describes the express recommendations of the Guidelines, use of Notes, and relationship of Figures.

<p>Guideline 0.5 (Referenced Publications)</p>	<p>Added new Guideline, updated references.</p>	<p>Added U.S. and Canada codes and guidelines references necessary to the practice of kitchen and bath design. Removed the Bibliography.</p>
<p>Guideline 1.1 (Clear Floor Space)</p>	<p>Renamed Guideline, reduce duplication.</p>	<p>Renamed from “1.5 Clear Floor Space at Activity Centers” to add clarity. Harmonized all clear floor space recommendations and figures into a single Guideline.</p>
<p>Guideline 1.2 (Turning Diameters)</p>	<p>Added clarity, reduced duplication, and ensured code compliance.</p>	<p>Centralized all turning diameter recommendations and figures from the Appendix and figures into a single new Guideline.</p>
<p>Guideline 1.3 (T-turn Maneuvers)</p>	<p>Added a new Guideline, reduced duplication, and added code compliance.</p>	<p>Centralized all t-turn maneuver recommendations and figures from the Appendix and figures into a single new Guideline.</p>
<p>Guideline 1.4 (Knee and Toe Clearances)</p>	<p>Added a new Guideline, error correction, reduced duplication, and code compliance.</p>	<p>Errata correction and code update. Centralized all knee and toe clearance recommendations and figures from previous Guidelines “2.1.4 Work Surface Heights at Kitchen Activity Centers”, “3.1.1 Grooming & Sink Activity Center”, and “3.1.2 Lavatory Sink & Faucet Planning” and figures into a new single Guideline.</p>
<p>Guideline 1.5 (Circulation Clearances)</p>	<p>Added a new Guideline, error correction, reduced duplication, add code-compliance</p>	<p>Errata correction and code update. Centralized all circulation clearance recommendations and figures from previous “1.6 Work Zone Clearances at Activity Centers” and figures into a single Guideline.</p>

<p>Guideline 1.6 (Comfort (Buffer) Zones)</p>	<p>Added a new Guideline to reduce duplication.</p>	<p>Centralized all comfort zone recommendations and figures from previous “1.6 Work Zone Clearances at Activity Centers” and figures into a single Guideline.</p>
<p>Guideline 1.7 (Common Height and Reach Ranges)</p>	<p>Added a new Guideline to reduce duplication.</p>	<p>Reduced duplication with centralized common heights and reach range recommendations and figures from previous Guidelines and figures into a single Guideline.</p>
<p>Guideline 1.8 (Accessible Height and Reach Ranges)</p>	<p>Added a new Guideline to reduce duplication.</p>	<p>Reduced duplication with centralized accessible height and reach range recommendations and figures from previous Guidelines and figures into a single Guideline.</p>
<p>Guideline 1.9 (Grab Bars and Assist Bars)</p>	<p>Errata correction: added a new Guideline to reduce duplication.</p>	<p>Errata correction and reduce duplication with centralized grab bar type, size recommendations, and figures from the previous edition into a single Guideline. Grab bar installation locations are covered separately. Defined assist bars and their appropriate use.</p>
<p>Guideline 2.1 (Doors and Doorways)</p>	<p>Updated Guideline for clarity and code-compliance.</p>	<p>Renamed from “1.1 Doorways” to add clarity. Updated recommendations for code compliance harmonization with the U.S. and Canada.</p>
<p>Guideline 2.2 (Door Hardware)</p>	<p>Updated Guideline for clarity and code-compliance.</p>	<p>Updated recommendations for code compliance and accessible design requirement harmonization within both the U.S. and Canada.</p>
<p>Guideline 2.3 (Floor Transitions and Steps)</p>	<p>Updated Guideline for clarity and code-compliance.</p>	<p>Renamed from “1.3 Floor Transitions” and added clarity. Updated recommendations for code compliance and accessible design requirement harmonization within both the U.S. and Canada.</p>
<p>Guideline 2.4 (Door Interference)</p>	<p>Updated Guideline for clarity.</p>	<p>Renamed from “1.4 Door & Equipment Interference” and added clarity. Relocated pocket door requirements to Guideline 2.1 Doors and Doorways.</p>

Guideline 2.7 (Windows)	Added a new Guideline.	Windows were not addressed previously. Provides recommendations for planning that consider window (glazing) placement and alterations.
Guideline 3.1.1 (Kitchen Work Centers)	Added a new Guideline.	Errata correction. Identifies kitchen work centers based on historical planning materials. Defines the primary and secondary work centers in a kitchen with typical equipment, activities, and tasks.
Guideline 3.1.2 (Kitchen Activity Zones)	Errata correction, updated Guideline for clarity.	Errata correction. Renamed from “2.1.1 Primary Kitchen Activity Centres” and “2.1.2 Secondary Activity Centers” to allow for Guideline 3.1.1 Kitchen work centers addition. Harmonized content based on historical planning materials. Condensed materials for clarity.
Guideline 3.1.3 (Kitchen Counter and Work Surfaces)	Errata correction, updated Guideline for clarity.	Errata correction. Renamed from “2.1.4 Work Surface Heights at Kitchen Activity Centers”, delineated Accessible Design Recommendations, and condensed materials for clarity.
Guideline 3.1.4 (Kitchen Work Route Distance)	Updated Guideline for clarity.	Renamed from “2.1.5 Work Route Distance Between Kitchen Activity Centers” and harmonized content based on historical planning materials.
Guideline 3.1.5 (Kitchen Landing Areas)	Updated Guideline for clarity.	Updated Guideline to condense and clarify.
Guideline 3.1.6 (Kitchen Eating and Seating Counters)	Errata correction, separated material, updated Guideline for clarity.	Errata correction. Renamed from “2.1.6 Seating Areas in Kitchens” and delineated Accessible Design Recommendations. Separated dining and banquettes into an additional Guideline for clarity.
Guideline 3.1.7 (Separated Dining Areas and Banquettes)	Added a new Guideline.	Separated Guideline from “2.1.6 Seating Areas in Kitchens”.

<p>Guideline 3.2.1 (General Code Compliance)</p>	<p>Added a new Guideline.</p>	<p>Identifies the code-compliance recommendations that a kitchen and bath designer should undertake when planning kitchen fixtures and equipment. Introduces energy use.</p>
<p>Guideline 3.2.2 (Kitchen Sink and Faucet)</p>	<p>Updated Guideline for clarity and code-compliance.</p>	<p>Renamed from “2.2.1 Kitchen Sink & Faucet Planning”, delineated Accessible Design Recommendations, and introduced water conservation for the U.S., CalGreen, and Canada. Included instant hot dispensers and water filtration equipment.</p>
<p>Guideline 3.2.3 (Dishwashing Equipment)</p>	<p>Updated Guideline for clarity.</p>	<p>Renamed from “2.2.2 Dishwashing Equipment Planning” and delineated Accessible Design Recommendations.</p>
<p>Guideline 3.2.4 (Preservation Equipment)</p>	<p>Updated Guideline for clarity.</p>	<p>Renamed from “2.2.3 Preservation Equipment Planning” and delineated Accessible Design Recommendations.</p>
<p>Guideline 3.2.5 (Cooking Surface Equipment)</p>	<p>Updated Guideline for clarity.</p>	<p>Renamed from “2.2.4 Cooking Surface Equipment Planning” and delineated Accessible Design Recommendations.</p>
<p>Guideline 3.2.6 (Kitchen Exhaust Equipment)</p>	<p>Errata correction, separated material, updated Guideline for clarity.</p>	<p>Errata correction. Renamed from “2.2.5 Ventilation Equipment Planning” for an accurate description of the guideline and harmonized content based on historical planning materials. Ventilation materials are separated into 7.1 Ventilation systems planning.</p>
<p>Guideline 3.2.7 (Ovens, Microwaves, and Other Auxiliary Point-of-use Equipment)</p>	<p>Updated Guideline for clarity.</p>	<p>Renamed from “2.2.6 Ovens, Microwaves and Other Auxiliary Point-Of-Use Equipment Planning”, delineated Accessible Design Recommendations, and harmonized content based on historical planning materials.</p>

<p>Guideline 3.2.8 (Household Waste Receptacle)</p>	<p>Updated Guideline for clarity.</p>	<p>Renamed from “2.2.7 Waste, Recycling & Organics Receptacle Planning” for an accurate description of the guideline and harmonized content based on historical planning materials.</p>
<p>Chapter 4.1 (Bath Center Planning)</p>	<p>Centralized section within the chapter for ease of use.</p>	<p>Errata correction. Separated and focused materials for bath planning activity from “3.1 Bath & Grooming Sink Center Planning”, “3.2 Toileting Center Planning”, and “3.3 Bathing & Showering Center Planning”. Separated fixtures and equipment into 4.2 Bath fixture and equipment planning for consistency.</p>
<p>Guideline 4.1.1 (Bath Cleansing Centers)</p>	<p>Added a new Guideline.</p>	<p>Errata correction. Identifies bath cleansing centers based on historical planning materials. Defines the cleansing centers in a bath with typical equipment, activities, and tasks.</p>
<p>Guideline 4.1.2 (Grooming Center Clearances)</p>	<p>Errata correction, separated material, updated Guideline for clarity and code compliance.</p>	<p>Errata correction. Renamed from “3.1.1 Grooming & Sink Activity Center”, delineated Accessible Design Recommendations with code compliance, and harmonized content based on historical planning materials.</p>
<p>Guideline 4.1.3 (Vanity Counters and Work Surfaces)</p>	<p>Updated Guideline to reduce duplication.</p>	<p>Renamed from “3.1.3 Work Surface Planning at the Grooming & Sink Center”, delineated Accessible Design Recommendations, and eliminated duplicated materials addressed in Chapter 1 Human Factors and Accessibility.</p>
<p>Guideline 4.1.4 (Toileting Center Clearances)</p>	<p>Updated Guideline to reduce duplication and increase clarity.</p>	<p>Renamed from “3.2 Toileting Center Planning”, combined and simplified all subsequent Guidelines throughout, added toilet configurations, delineated Accessible Design Recommendations, and eliminated duplicated materials addressed in Chapter 1 Human Factors and Accessibility.</p>

<p>Guideline 4.1.5 (Toilet Compartments)</p>	<p>Updated Guideline to reduce duplication and increase clarity.</p>	<p>Renamed from “3.2.4 Toilet Compartment Planning”, delineated Accessible Design Recommendations, and simplified materials.</p>
<p>Guideline 4.1.6 (Bathing/Showering Center Clearances)</p>	<p>Updated Guideline to reduce duplication, add clarity, and update code compliance.</p>	<p>Errata correction. Renamed from “3.3.1 Bathing & Showering Activity Center”, delineated Accessible Design Recommendations, simplified materials, and updated with code compliance.</p>
<p>Guideline 4.1.7 (Shower Compartments)</p>	<p>Updated Guideline to reduce duplication and increase clarity.</p>	<p>Renamed from “3.3.4 Shower Compartment Planning”, delineated Accessible Design Recommendations, and simplified materials.</p>
<p>Guideline 4.1.8 (Shower Surrounds, Curtains, and Rods)</p>	<p>Updated Guideline to reduce duplication and increase clarity.</p>	<p>Renamed from Section “3.3.8 Bathtub/Shower Glazing, Doors, and Curtains”, simplified materials, separated glazing to 6.4.5 Glazing, including framed and frameless shower glazing recommendations.</p>
<p>Guideline 4.1.9 (Bath and Shower Seating)</p>	<p>Added a new Guideline.</p>	<p>Errata correction. Isolated Guideline materials from “3.3.1 Bathing & Showering Activity Center”, “3.3.2 Bathtub Fixture Planning”, and “3.3.4 Shower Compartment Planning.”</p>
<p>Guideline 4.1.10 (Steam Shower Compartments)</p>	<p>Correction, simplification, and clarity.</p>	<p>Renamed from Section “3.3.5 Steam Shower Compartment Planning”, combined and simplified Guidelines throughout.</p>
<p>Guideline 4.1.11 (Wetroom Compartments)</p>	<p>Correction, simplification, and clarity.</p>	<p>Renamed from Section “3.3.6 Wetroom Compartment Planning”, combined and simplified Guidelines throughout.</p>
<p>Guideline 4.1.12 (Recessed Storage Niches)</p>	<p>Correction, simplification, and clarity.</p>	<p>Isolated Guideline materials from “3.3.9 Accessory & Storage Planning at the Bathing & Showering Center” for clarity. Separated materials into 4.2.15 Bath fittings.</p>

<p>Section 4.2 (Bath Fixture and Equipment Planning)</p>	<p>Centralized section within the chapter for ease of use.</p>	<p>Errata correction. See Section 4.1.</p>
<p>Guideline 4.2.1 (General Code Compliance)</p>	<p>Added a new Guideline, updated Guideline for code-compliance.</p>	<p>Identifies the code-compliance recommendations that a kitchen and bath designer should undertake when planning bath fixtures and equipment. Introduces energy use.</p>
<p>Guideline 4.2.2 (Lavatory Sink and Faucet)</p>	<p>Updated Guideline for clarity and code-compliance.</p>	<p>Errata correction. Renamed from “3.1.2 Lavatory Sink & Faucet Planning”, delineated Accessible Design Recommendations, and introduced water conservation for the U.S., CalGreen, and Canada.</p>
<p>Guideline 4.2.3 (Vanity Mirrors)</p>	<p>Updated Guideline for clarity and code-compliance.</p>	<p>Errata correction. Renamed from “3.1.4 Mirrors at Grooming & Sink Center” and delineated Accessible Design Recommendations.</p>
<p>Guideline 4.2.4 (Toilet and Integrated Bidet-Toilet Fixtures)</p>	<p>Updated Guideline for clarity and code-compliance.</p>	<p>Errata correction. Renamed from “3.2.2 Toilet/Integrated Bidet Toilet Fixture Planning”, delineated Accessible Design Recommendations, and introduced water conservation for the U.S., CalGreen, and Canada.</p>
<p>Guideline 4.2.5 (Grab Bars at a Toilet)</p>	<p>Error correction, separation of Guideline materials for clarity and ease of use, and updated code compliance.</p>	<p>Errata correction. Terminology correction. Isolated grab bar materials from “3.2.2 Toilet/Integrated Bidet Toilet Fixture Planning” for ease of use. Align code compliance with Canada for adaptable and accessible dwellings.</p>
<p>Guideline 4.2.6 (Bidet Fixtures)</p>	<p>Error correction, separated Guideline materials for clarity and</p>	<p>Errata correction. Isolated bidet materials from “3.2.3 Bidet/Urinal Fixture Planning” for ease of use, clarified non-accessibility of the fixture, and introduced water conservation for the U.S., CalGreen, and Canada.</p>

	ease of use, updated code compliance.	
Guideline 4.2.7 (Urinal Fixtures)	Error correction, separated Guideline materials for clarity and ease of use, updated code compliance.	Errata correction. Isolated bidet materials from “3.2.3 <i>Bidet/Urinal Fixture Planning</i> ” for ease of use, delineated Accessible Design Recommendations, and introduced water conservation for the U.S., CalGreen, and Canada.
Guideline 4.2.8 (Grab Bars at a Urinal)	Error correction, separated Guideline materials for clarity and ease of use, updated code compliance.	Errata correction. Terminology correction. Isolated grab bar materials from “3.2.3 <i>Bidet/Urinal Fixture Planning</i> ” for ease of use. Align code compliance with Canada for adaptable and accessible dwellings.
Guideline 4.2.9 (Bathtub Fixtures)	Error correction, separated Guideline materials for clarity and ease of use, updated code compliance.	Errata correction. Terminology correction. Isolated bathtub materials from “3.3.2 <i>Bathtub Fixture Planning</i> ” for ease of use. Align code compliance with Canada for adaptable and accessible dwellings.
Guideline 4.2.10 (Grab Bars at a Bathtub)	Error correction, separated Guideline materials for clarity and ease of use, updated code compliance.	Errata correction. Terminology correction. Isolated grab bar materials from “3.3.2 <i>Bathtub Fixture Planning</i> ” for ease of use. Align code compliance with Canada for adaptable and accessible dwellings.
Guideline 4.2.11 (Grab Bars at a Shower)	Error correction, separated Guideline materials for clarity and	Errata correction. Terminology correction. Isolated grab bar materials from “3.3.4 <i>Shower Compartment Planning</i> ” for ease of use. Align code compliance with Canada for adaptable and accessible dwellings.

	ease of use, updated code-compliance.	
Guideline 4.2.12 (Bath Volume Controls and Fillers)	Error correction, updated code-compliance.	Errata correction. Renamed from “3.3.3 <i>Bath Volume Control & Filler Planning</i> ”. Figures updated to align with the Guideline and introduce water conservation for the U.S., CalGreen, and Canada.
Guideline 4.2.13 (Shower Volume Controls and Spray Heads)	Error correction, updated code-compliance.	Errata correction. “3.3.7 <i>Shower Volume Control & Spray Head Planning</i> ”. Delineated Accessible Design Recommendations and introduced water conservation for the U.S., CalGreen, and Canada.
Guideline 4.2.14 (Bath Exhaust Equipment)	Added a new Guideline.	Added bath exhaust equipment Guidelines and harmonized content based on historical planning materials.
Guideline 4.2.15 (Bath Accessories)	Added a new Guideline.	Isolated Guideline materials from “3.3.9 <i>Accessory & Storage Planning at the Bathing & Showering Center</i> ” for clarity.
Guideline 5.1 (General Code Compliance)	Added a new Guideline, updated Guideline for code-compliance.	Identifies the code-compliance recommendations that a kitchen and bath designer should undertake when planning support spaces. Introduces energy use.
Guideline 5.2 (Laundry Planning)	Correction, simplification, and clarity.	Isolated Guideline materials from “7.1 <i>Laundry Room/Area Planning</i> ”.
Guideline 5.2.1 (Laundry Infrastructure and Clearances)	Updated Guideline for code-compliance.	Isolated Guideline materials from “7.1 <i>Laundry Room/Area Planning</i> ” and align code compliance with Canada for adaptable and accessible dwellings.

Guideline 5.2.2 (Laundry Sink and Faucet)	Updated Guideline for code-compliance.	Isolated Guideline materials from “7.1 Laundry Room/Area Planning” and align code compliance with Canada for adaptable and accessible dwellings.
Guideline 5.2.3 (Laundry Equipment)	Updated Guideline for code-compliance.	Isolated Guideline materials from “7.1 Laundry Room/Area Planning” and align code compliance with Canada for adaptable and accessible dwellings.
Guideline 5.2.4 (Laundry Storage and Accessories)	Updated Guideline for code-compliance.	Isolated Guideline materials from “7.1 Laundry Room/Area Planning” and align code compliance with Canada for adaptable and accessible dwellings.
Guideline 5.3 (Closet Planning)	Correction, simplification, and clarity.	Isolated Guideline materials from “7.2 Closet Storage Planning”.
Guideline 5.3.1 (Closet Clearances)	Updated Guideline for code-compliance.	Isolated Guideline materials from “7.2 Closet Storage Planning” and align code compliance with Canada for adaptable and accessible dwellings.
Guideline 5.3.2 (Clothing Storage and Accessories)	Updated Guideline for code-compliance.	Isolated Guideline materials from “7.2 Closet Storage Planning” and align code compliance with Canada for adaptable and accessible dwellings.
Guideline 5.4 (Exercise Area Planning)	Correction, simplification, and clarity.	Renamed Guideline materials from “7.3 Home Gym & Exercise Area Planning”.
Guideline 5.5 (Saunas and Infrared Room Planning)	Correction, simplification, and clarity.	Renamed Guideline materials from “7.3 Indoor Saunas and Infrared Rooms Planning”.

<p>Guideline 6.1 (General Practice)</p>	<p>Added a new Guideline.</p>	<p>Provide planning recommendations for design professionals when assessing interior environments for people and the existing conditions (or supplied base building plans).</p>
<p>Guideline 6.2 (Wall Blocking and Reinforced Backing)</p>	<p>Added a new Guideline, updated Guideline for code-compliance.</p>	<p>Provide planning recommendations for design professionals when planning locations and assemblies for wall blocking or reinforced backing materials.</p>
<p>Guideline 6.3 (Waterproof Finishes and Moisture-Resistant Backing)</p>	<p>Added a new Guideline, updated Guideline for code-compliance.</p>	<p>Provide planning recommendations for design professionals when planning locations and assemblies for waterproofing and moisture-resistant backing.</p>
<p>Section 6.4 (Storage Systems Planning)</p>	<p>Added a new Section of Guidelines.</p>	<p>Expanded from “4.1 Cabinetry & Casework Planning” to provide clarity on planning recommendations for design professionals when specifying storage systems (architectural casework, millwork, and manufactured cabinetry).</p>
<p>Guideline 6.4.1 (Storage Types and Configurations)</p>	<p>Added a new Guideline.</p>	<p>Isolated from “4.1 Cabinetry & Casework Planning” to provide clarity on common storage dimensions for design professionals when specifying storage systems in the U.S. and Canada.</p>
<p>Guideline 6.4.2 (Storage Common Dimensions)</p>	<p>Added a new Guideline.</p>	<p>Provide planning recommendations and common dimensions for design professionals when planning storage systems. Accessible design recommendations added.</p>
<p>Guideline 6.4.3 (Casework Mechanical Hardware)</p>	<p>Added a new Guideline.</p>	<p>Provide planning recommendations for design professionals when planning cabinet hinges or catches and cabinet drawer glides utilized in storage systems.</p>

Guideline 6.4.4 (Cabinet Interior and Exterior Finishing)	Added a new Guideline, updated Guideline for code-compliance.	Provide manufacturing and finishing recommendations for design professionals with CARB compliance when planning storage systems with a focus on the health, safety, and welfare of people.
Section 6.5 (Surfacing Materials)	Added a new Section of Guidelines.	Expanded from “4.4 <i>Material & Finish Planning</i> ” provides clarity on specifying recommendations for design professionals when planning surfaces.
Guideline 6.5.1 (Surface Material Health and Sustainability)	Added a new Guideline, updated Guideline for code-compliance.	Provided suitability and environmental stewardship recommendations for design professionals when specifying surfaces.
Guideline 6.5.2 (Counter and Work Surface Materials)	Errata correction. Added a new Guideline.	Return of safety provisions. Provided clarity on planning recommendations for design professionals when planning counter surfaces. Includes Accessible Design Recommendations.
Guideline 6.5.3 (Wall Surface Materials)	Added a new Guideline.	Provided clarity on planning recommendations for design professionals when planning wall surfaces.
Guideline 6.5.4 (Flooring Covering Materials)	Errata correction. Added a new Guideline.	Errata correction. Expanded from “4.4 <i>Material & Finish Planning</i> ” to provide clarity on planning recommendations for design professionals when specifying flooring surfaces.
Guideline 6.5.5 (Glazing Materials)	Errata correction. Added a new Guideline.	Errata correction. Isolated materials from “3.4.9 <i>Bathtub/Shower Glazing, Doors, and Curtains</i> ” to provide clarity on planning recommendations for design professionals when specifying glazing.
Guideline 7.1 (Ventilation Systems Planning)	Added a new Section of Guidelines.	Expanded from “8.1 <i>Ventilation Planning</i> ” to provide clarity on planning recommendations for design professionals when specifying ventilation systems (kitchen or bathroom exhaust).

<p>Guideline 7.1.1 (General Infrastructure)</p>	<p>Added a new Guideline, updated Guideline for code-compliance.</p>	<p>Added, combined, and reduced duplication from previous “2.2.5 Ventilation Equipment Planning”, omitted bath exhaust (now 4.2.14 Bath exhaust equipment), “7.1 Ventilation Planning”, “8.1 Ventilation Planning”, and “A.5 Ventilation Calculation for Kitchens & Baths”, updated code-compliance and historical materials for general infrastructure recommendations.</p>
<p>Guideline 7.1.2 (Kitchen Exhaust Calculations)</p>	<p>Added a new Guideline, updated Guideline for code-compliance.</p>	<p>Errata correction. Condensed and clarified kitchen exhaust recommendations from the “A.5 Ventilation Calculation for Kitchens & Baths” and updated examples.</p>
<p>Guideline 7.1.3 (Bath Exhaust Calculations)</p>	<p>Added a new Guideline, updated Guideline for code-compliance.</p>	<p>Errata correction. Condensed and clarified bath exhaust recommendations from the “A.5 Ventilation Calculation for Kitchens & Baths” and updated examples.</p>
<p>Guideline 7.1.4 (Laundry Exhaust)</p>	<p>Added a new Guideline, updated Guideline for code-compliance.</p>	<p>Clarified and updated laundry exhaust recommendations.</p>
<p>Guideline 7.1.5 (Make-Up Air Systems)</p>	<p>Added a new Guideline, updated Guideline for code-compliance.</p>	<p>Clarified and updated make-up air system recommendations.</p>
<p>Guideline 7.2 (Power and Communication Systems Planning)</p>	<p>Added a new Section of Guidelines.</p>	<p>Expanded from “8.2 Electrical Planning” to provide clarity on planning recommendations for design professionals when specifying power and communication systems.</p>
<p>Guideline 7.2.1 (General Infrastructure)</p>	<p>Added a new Guideline, updated Guideline for code-compliance.</p>	<p>Added, separated, and reduced duplication from the previous “8.2 Electrical Planning”; updated code compliance and historical materials for general infrastructure recommendations.</p>

Guideline 7.2.2 (Kitchen Power Outlets)	Added a new Guideline, updated Guideline for code-compliance.	Added, separated, and reduced duplication from the previous “8.2 <i>Electrical Planning</i> ”, updated code compliance, specifically related to kitchen island and peninsula outlets, and historical materials.
Guideline 7.2.3 (Bath Power Outlets)	Added a new Guideline, updated Guideline for code-compliance.	Added, separated, and reduced duplication from the previous “8.2 <i>Electrical Planning</i> ”, updated code compliance, specifically related to safety and distances from water sources, and historical materials.
Guideline 7.2.4 (Laundry Power Outlets)	Added a new Guideline, updated Guideline for code-compliance.	Added, separated, and reduced duplication from the previous “8.2 <i>Electrical Planning</i> ”, updated code compliance, specifically related to laundry area outlets, and historical materials.
Guideline 7.2.5 (Home Automation)	Added a new Guideline.	Added new recommendations related to home automation and audio-visual systems.
Guideline 7.3 (Lighting and Illumination Systems Planning)	Added a new Section of Guidelines.	Expanded from “8.3 <i>Lighting Planning</i> ” to provide clarity on planning recommendations for design professionals when specifying lighting and illumination systems.
Guideline 7.3.1 (General Infrastructure)	Added a new Guideline, updated Guideline for code-compliance.	Added, separated, and reduced duplication from the previous “8.3 <i>Lighting Planning</i> ”, updated code compliance, added illumination targets, and historical materials for general infrastructure recommendations.
Guideline 7.3.2 (Kitchen Illumination)	Added a new Guideline.	Updated recommendations related to planning illumination in kitchens.
Guideline 7.3.3 (Bath Illumination)	Added a new Guideline.	Updated recommendations related to planning illumination in baths.

<p>Guideline 7.3.2 (Closet Illumination)</p>	<p>Added a new Guideline, updated Guideline for code-compliance.</p>	<p>Updated recommendations related to planning illumination in closets.</p>
<p>Guideline 7.4 (Plumbing Systems Planning)</p>	<p>Errata correction, updated Guideline for code-compliance.</p>	<p>Errata correction. Renamed from “8.4 Plumbing Fixture & Equipment Planning”, updated code-compliance, specifically related to trap-arm distances from fixtures to vent, and integrated historical materials</p>
<p>Guideline 7.5 (Fire and Life-Safety Planning)</p>	<p>Errata correction, updated Guideline for code-compliance.</p>	<p>Errata correction. Renamed from “8.5 Fire Protection”, updated code compliance, specifically related to fire extinguishers, smoke detectors, CO alarms, sprinklers, and integrated historical materials.</p>
<p>Guideline 8.1 (General Code)</p>	<p>Added a new Guideline, duplication reduction, updated Guideline for code-compliance.</p>	<p>Duplication reduction between “5.1 Outdoor Kitchen Infrastructure” and “6.1 Outdoor Bath Infrastructure”. Identifies the code-compliance recommendations that a kitchen and bath designer should undertake when planning outdoor living spaces.</p>
<p>Guideline 8.2 (Outdoor Infrastructure)</p>	<p>Added a new Guideline, duplication reduction, updated Guideline for code-compliance.</p>	<p>Duplication reduction between “5.1 Outdoor Kitchen Infrastructure” and “6.1 Outdoor Bath Infrastructure”. Identifies the code-compliance recommendations that a kitchen and bath designer should undertake when planning outdoor living spaces related to infrastructure.</p>
<p>Guideline 8.3 (Safety in an Outdoor Kitchen or Bath)</p>	<p>Added a new Guideline, duplication reduction, updated Guideline for code-compliance.</p>	<p>Duplication reduction between “5.6 Outdoor Kitchen Environment” and “6.6 Outdoor Bath Environment”. Identifies the code-compliance recommendations that a kitchen and bath designer should undertake when planning outdoor living spaces related to safety.</p>
<p>Guideline 8.4.1 (Outdoor Kitchen Sink and Faucet)</p>	<p>Rename Guideline.</p>	<p>Renamed from “5.3 Outdoor Kitchen Sink & Faucet Planning”.</p>

<p>Guideline 8.4.2 (Outdoor Kitchen Grilling and Oven Equipment)</p>	<p>Rename Guideline.</p>	<p>Renamed from “5.4 <i>Outdoor Kitchen Equipment Planning</i>”.</p>
<p>Guideline 8.4.3 (Outdoor Kitchen Ventilation Equipment)</p>	<p>Rename Guideline.</p>	<p>Renamed from “5.5 <i>Outdoor Kitchen Ventilation</i>”.</p>
<p>Guideline 8.5.1 (Outdoor Bath, Lavatory Sink and Faucet)</p>	<p>Rename Guideline.</p>	<p>Renamed from “6.4 <i>Outdoor Bath Sink & Faucet Planning</i>”.</p>
<p>Guideline 8.5.2 (Outdoor Bath Fixtures and Amenities)</p>	<p>Rename Guideline.</p>	<p>Renamed from “6.4 <i>Outdoor Bath Equipment Planning</i>”.</p>
<p>Guideline 8.5.3 (Outdoor Bath Ventilation Equipment)</p>	<p>Rename Guideline.</p>	<p>Renamed from “6.5 <i>Outdoor Bath Ventilation</i>”.</p>
<p>Guideline 8.6 (Outdoor Materials and Finishes)</p>	<p>Added a new Guideline, duplication reduction, updated Guideline for code-compliance.</p>	<p>Duplication reduction between “5.6 <i>Outdoor Kitchen Environment</i>” and “6.6 <i>Outdoor Bath Environment</i>”. Identifies the code-compliance recommendations that a kitchen and bath designer should undertake when planning outdoor living spaces related to specifying materials and finishes.</p>

Summary of Appendix Changes

New Appendix	Change Type	Description of Change
Appendix A - Accessible Design Basics	Reorganized images, Sections, and introduced checklists to the new material within the new edition.	Reformatted figures from A.1 to A.5 to align with the new numbering system. Reduction of repetitive information sequenced into Chapter 1, Human Factors and Accessibility, and introduction of planning checklists.
Appendix B - Common Item Sizes	Rename Appendix	Reformatted tables to align from A.6 to A.11 with the new numbering system and page formatting.
Appendix C	Rename Appendix	Reformatted tables to align from A.12 with the new numbering system and page formatting.
Abbreviations	Added Abbreviations	Listing abbreviations simplifies common terminology and abbreviations used throughout the Guidelines.
Glossary	Added Glossary	Lists terminology used in the Guidelines that requires additional definition.

NKBA Kitchen & Bath Planning Guidelines, 5th Edition – Errata

The **NKBA Kitchen & Bath Planning Guidelines** are a truly collaborative work, built on the shared insights and technical expertise of dedicated subject matter experts and industry consultants. While immense care and meticulous attention to detail go into every update, even the most thoroughly reviewed publications can occasionally harbor a few elusive misprints. NKBA's engaged community of readers helps by alerting us to these oversights.

Please see the following list for a running summary of the corrections and errata that have been noted to date for the fifth edition.

Part 1 - Text Corrections

CORRECTION 1

Page 174, Chapter 4, Guideline 4.2.10, Paragraph (r)

- **Instead of:** “located between 26” to 32” (660 mm to 815 mm).”
- **Read:** “located between 26” to 32” (660 mm to 815 mm) AFF.”

Part 2 - Figure Corrections

CORRECTION 2

Page 32, Figure 21: Knee and toe clearances at activity centers

Instead of:

Read:

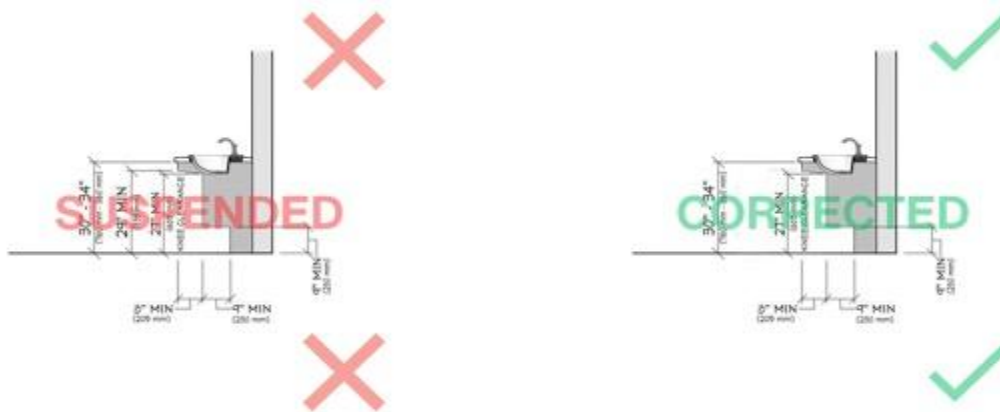


Figure 21 has been corrected to remove an additional dimension. The figure on the left incorrectly illustrates a 29" (735 mm) high dimension to the underside of an item. The corrected figure on the right eliminates this dimension.

CORRECTION 3

Page 62, Figure 47: Passageway clearances and heights to accommodate persons with a wheelchair/mobility-aid

Instead of:

Read:

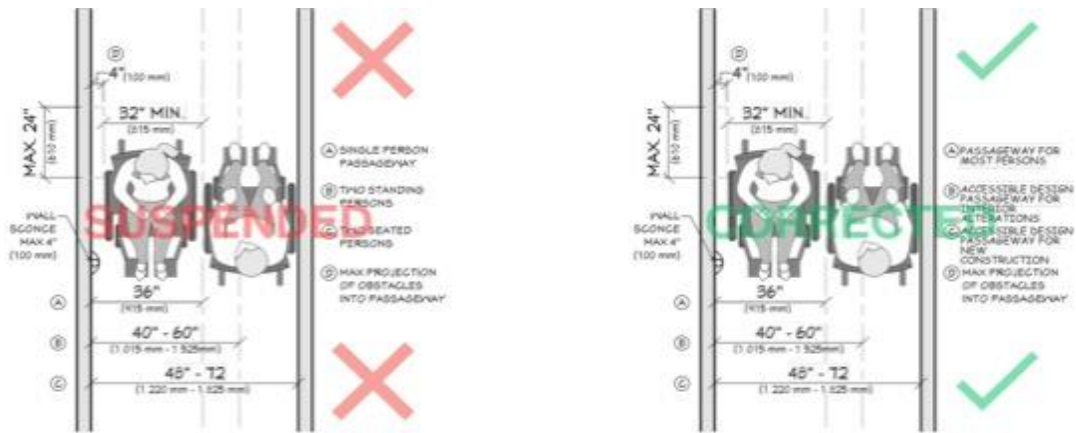


Figure 47 has been corrected to eliminate confusion. The figure on the left incorrectly describes keynotes as (A) for a “Single person passageway”, (B) for a “Two standing persons”, and (C) for a “Two seated persons”. The corrected figure describes the keynotes as (A) for a “Passageway for most persons”, (B) for a “Accessible design passageway for interior alterations”, and (C) for a “Accessible design passageway for new construction”.

CORRECTION 4

Page 82, Figure 62: Kitchen landing areas with a sink

Instead of:

Read:

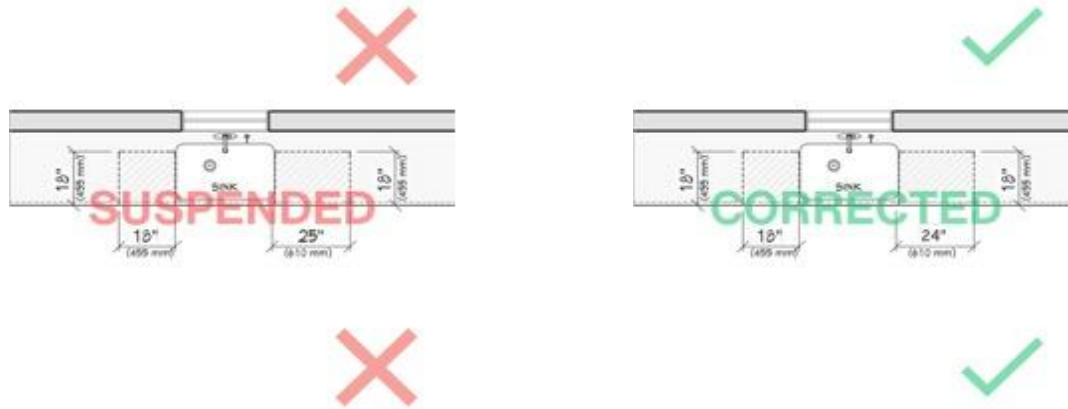


Figure 62 has been corrected to eliminate confusion. The figure on the left incorrectly illustrates a kitchen landing area size on one side of a kitchen sink as 25" by 18" (610 mm by 455 mm). The corrected figure on the right illustrates the kitchen landing area on one side of a kitchen sink as 24" by 18" (610 mm by 455 mm).

CORRECTION 5

Page 128, Figure 107: Toilet compartment with a clear floor space planned for a person with a wheelchair/mobility-aid

Instead of:

Read:

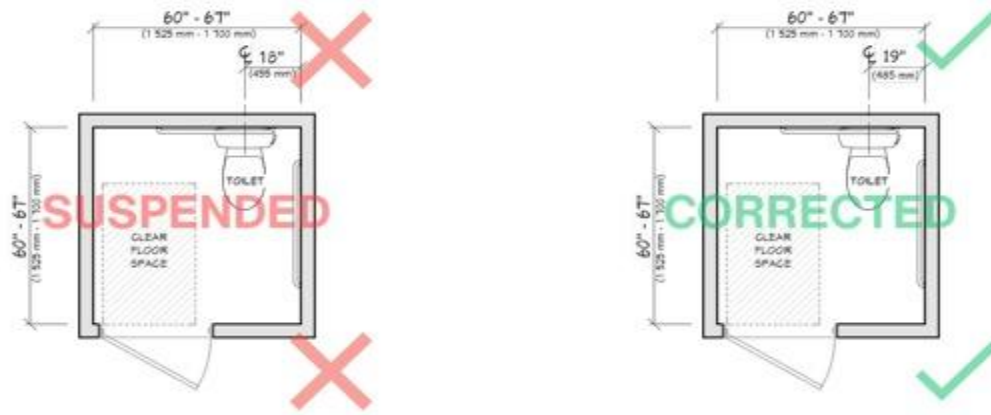


Figure 107 has been corrected to align with accessible design recommendations. The figure on the left incorrectly illustrates the toilet at 18" (455 mm) on-center. The corrected figure on the right illustrates the toilet at 19" (485 mm) on-center.

CORRECTION 6

Page 128, Figure 108: Toilet compartment with a lateral transfer planned for a person with a wheelchair/mobility-aid
Instead of:

Read:

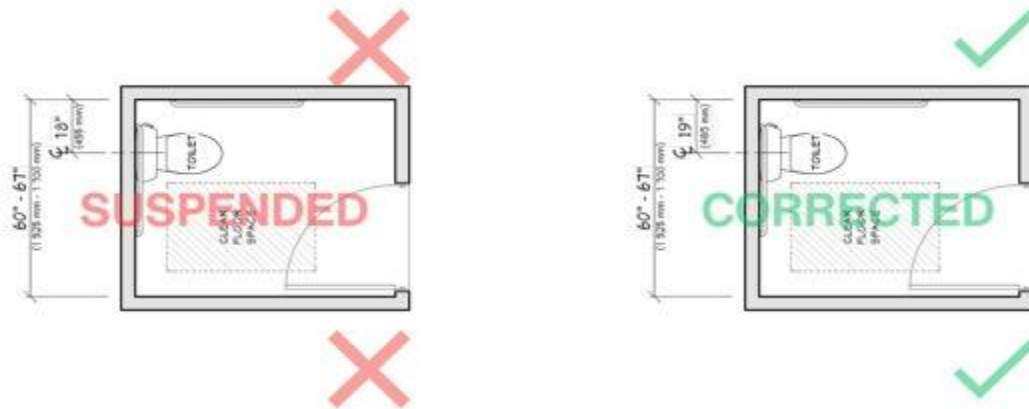


Figure 108 has been corrected to align with accessible design recommendations. The figure on the left incorrectly illustrates the toilet at 18" (455 mm) on-center. The corrected figure on the right illustrates the toilet at 19" (485 mm) on-center.

CORRECTION 7

Page 135, Figure 114: Moderately sized transfer shower footprint

Instead of:

Read:

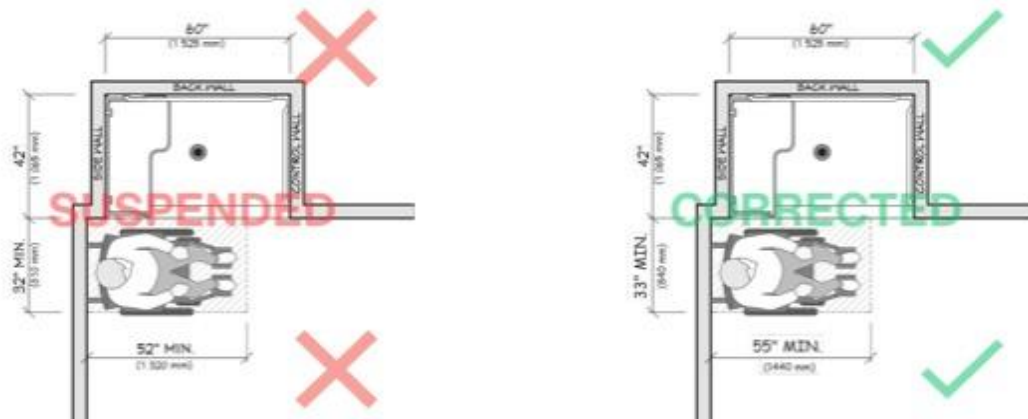


Figure 114 has been corrected to align with accessible design recommendations. The figure on the left incorrectly illustrates a clear floor space as 32" by 52" (810 mm by 1320 mm). The corrected figure on the right correctly illustrates a clear floor space as 33" by 55" (840 mm by 1440 mm).

CORRECTION 8

Page 156, Figure 136: Lateral transfer area at a toileting center for a person with a wheelchair/mobility-aid

Instead of:

Read:

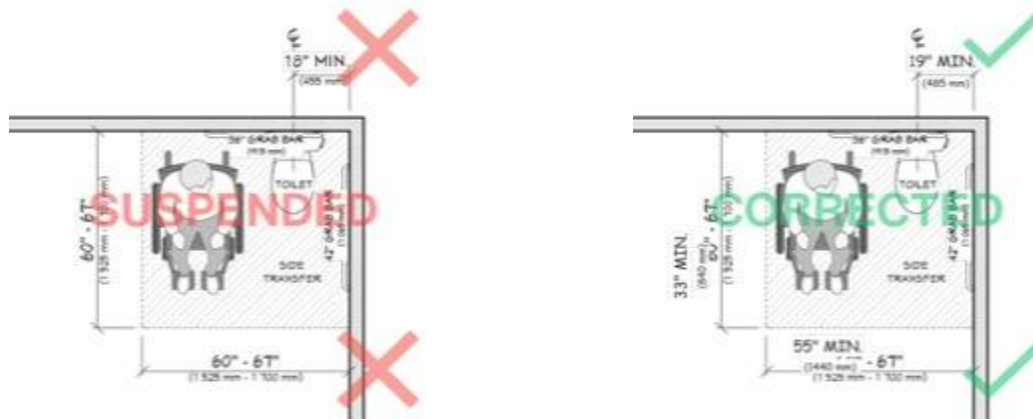


Figure 136 has been corrected to align with accessible design recommendations. The figure on the left incorrectly illustrates the toilet at 18" (455 mm) on-center. The corrected figure on the right illustrates the toilet at 19" (485 mm) on-center.

CORRECTION 9

Page 165, Figure 144: Grab bars located on the side wall to accommodate persons with a mobility-aid when using a urinal
Instead of:

Read:

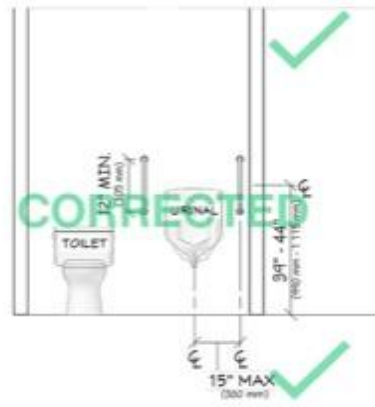


Figure 144 has been corrected to align with accessible design recommendations. The figure on the left incorrectly identifies the vertical grab bar as 18" MIN (455 mm). The corrected figure on the right identifies the vertical grab bar as 12" MIN (305 mm).

CORRECTION 10

Page 169, Figure 147: Bathtubs for two can accommodate side-by-side seating or an arrangement where people face each other

Instead of:

Read:

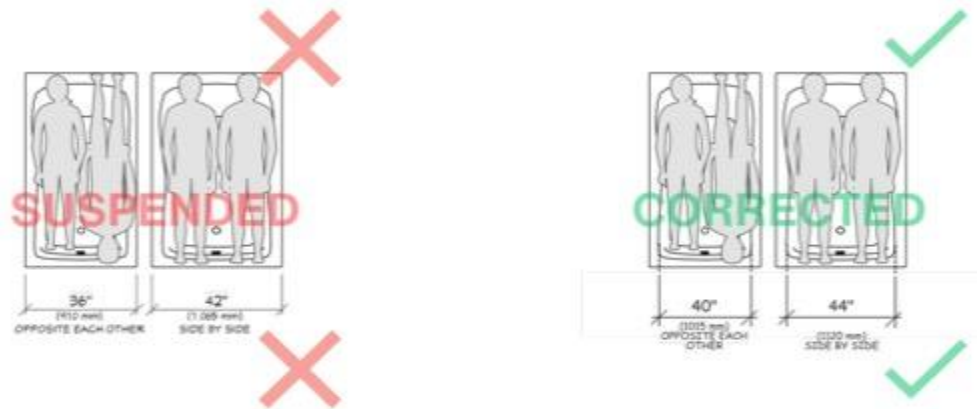


Figure 147 has been corrected to align with the planning recommendation. The figure on the left incorrectly dimensions the overall exterior width of the bathtubs as 36" (910 mm) and 42" (1065 mm) respectively. The corrected figure on the right dimensions the bathtub interior width as 40" (1015 mm) and 44" (1120 mm) respectively.

CORRECTION 11

Page 175, Figure 152: L-Shape grab bar located on the side wall at a bathtub without seating

Instead of:

Read:

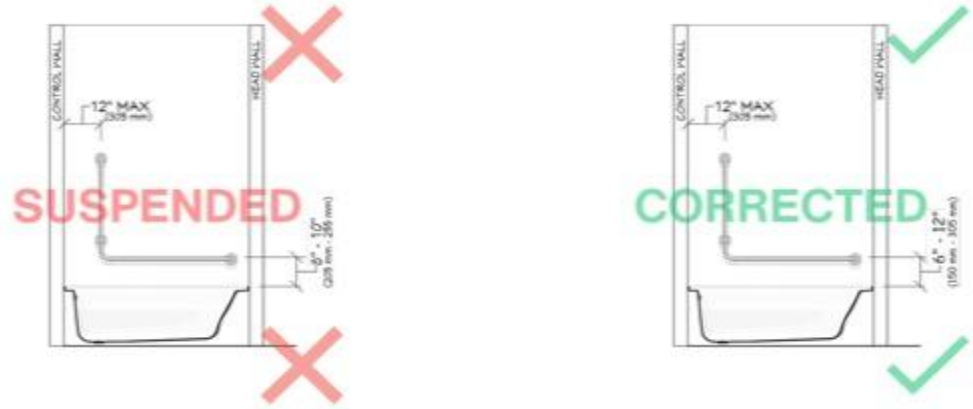


Figure 152 has been corrected to align with accessible design recommendations. The figure on the left incorrectly dimensions the distance of the L-Shape grab bar from the bathtub rim as between 8” to 10” (205 mm to 255 mm). The corrected figure on the right dimensions the distance of the L-Shape grab bar from the bathtub rim as between 6” to 12” (150 mm to 305 mm).

Proposing a Guideline Change

These Guidelines are subject to review within five years from the date of publication. We welcome input from design professionals, educators, and students that will improve the Guidelines. Suggestions for improvements will be referred to the appropriate committee.

To submit a proposal for change, please include the following information to info@nkba.org and include “Proposal for Guideline Changes” in the subject line:

- 1) Standard designation (number);
- 2) Relevant clause, table, and/or figure number;
- 3) Wording of the proposed change; and
- 4) Rationale for the change request.